



CUSTOM FABRIC PROGRAM

# AVAILABLE FABRICS



colored mesh • dove • dillon • gavotte • festival • interlink • icon • legend • diamond • ridgecrest  
tracery • mary go round • castillo • twilight • freeflex® • transport • fine tune • city park • lifesaver  
crave • trinket • brackle • gauge • champagne • element • key largo • cosmopolitan



**custom fabric program** | Choices in Fabric. Wherever chairs are identified with our CF graphic, you have hundreds of choices in fabric. Solids, patterns and textures. Simple and complex. Vinyls. Hospitality/healthcare-safe performance fabrics. Recycled selections. Choices for every environment. Many are IN STOCK. You can also choose C.O.M. (customer's own material). **Custom Fabrics add 3-4 weeks to the lead time.** Digital representations of fabrics are available at [www.officestar.net/fabrics](http://www.officestar.net/fabrics)



**recycled fabric** (page 184) | **100% Recycled.** Wherever chairs are identified with our CF graphic, you can select 100% recycled polyester fabrics from our Champagne, Elements and Ladders collections. All surpass 50K - 100 double-rub durability testing as well as CAL 117, NFPA 260 and UFAC Class 1 flammability standards. So you can protect your immediate environment as well as our planet. That's big-picture thinking. Digital representations of fabrics are available at [www.officestar.net/fabrics](http://www.officestar.net/fabrics)

# A | grade fabric

## NEW Fun Colors



-3M | Black



-6 | Green



-7 | Blue



-9 | Red



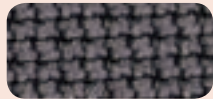
-261 | Pink



-512 | Purple

• contents 100% polyester • flammability CAL117 •

## Colored Mesh



-5811 | Steel



-5812 | Rouge



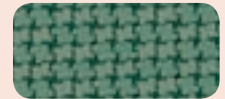
-5819 | Violet



-5877 | Sky



-5879 | Olive



-5881 | Jade

• contents 70% polyester, 30% cotton • surface abrasion 70,000 double rubs (Wyzenbeek), 35,000 double rubs (Martindale) • lightfastness 40 hours, Class 4 (AATCC Test Method 16E) • colorfastness Wet - Class 4.5, Dry - Class 4 (AATCC Test Method 8) • flammability Cal. 117, Section E, CS-191-53, Class 1 BIFMA FF1-78, NFPA 260-1989, UFAC, Class 1, B.S. 5852 Part 1: 1979 Ignition Source 0, Smoldering Cigarette •

## Dove

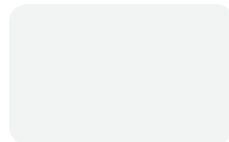
## Dillon (antimicrobial)



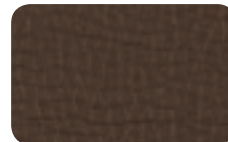
Attractive Antimicrobial vinyls available in 8 eye catching finishes. Dillon Antimicrobial vinyl is engineered to meet 200,000 double rubs and CAL117 flammability requirements.



-R100 | Lipstick



-R101 | Snow



-R102 | Java



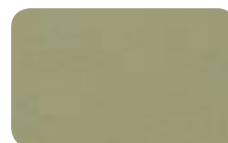
-R103 | Stratus



-R104 | Buff



-R105 | Blue



-R106 | Sage



-R107 | Black

• contents 100% polyurethane back 70% polyester, 30% cotton • surface abrasion 200,000+ cycles • treatments N/A • break strength warp 130 lbs, weft 120 lbs • flammability CA Tech Bull. 117, Section E UFAC Class 1 NFPA 260 Class 1 •

\*Due to differences in dye batches and variations in printing as well as viewing environments and uneven color fading there will be slight variations in color. Exact matching may not be possible.

## NEW Ridgecrest



-K015 | Meadow



-K016 | Beach



-K017 | Tide Pool



-K020 | Ink



-K018 | Putty



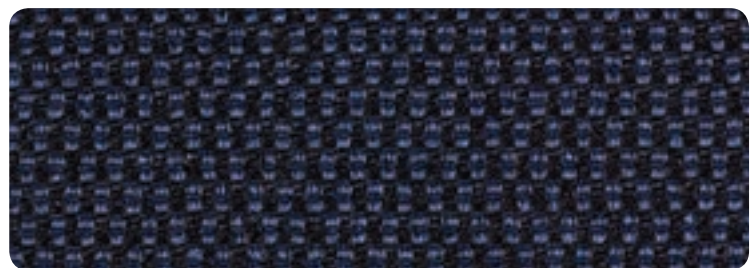
-K019 | Chocolate

- **contents** 100% polyester • **surface abrasion** exceeds 100,000 cycles (Wyzenbeek-#10 cotton duck abradant) • **backing** acrylic
- **break strength** WARP 80 lbs, WEFT 68 lbs (ASTMD4034) • **seam slippage** WARP 84 lbs, WEFT 72 lbs (ASTMD4034) •
- **light fastness** class 4/40 hrs min (AATCC16A) • **color fastness** Class 4 (ASTM D3597, AATC 8) Wet, Class 5 (ASTM D3597, AATCC 8) Dry • **flammability** CA Tech Bull. 117, Section E (CS-191-153) UFAC Class 1 •

## Gavotte



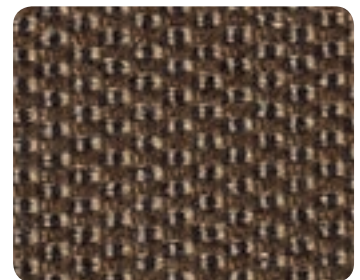
-897 | Burgundy



-894 | Blue



-895 | Grey

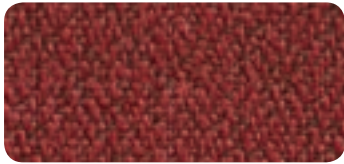


-896 | Taupe

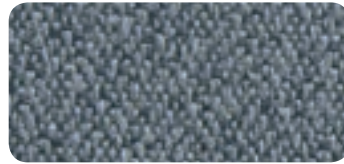
- **contents** 100% polyester • **surface abrasion** 30,000 cycles (cotton duck) •
- **break strength** warp 96 lbs, fill 99 lbs • **flammability** CA Tech Bull. 117, Section E • **treatments** N/A •

\*Due to differences in dye batches and variations in printing as well as viewing environments and uneven color fading there will be slight variations in color. Exact matching may not be possible.

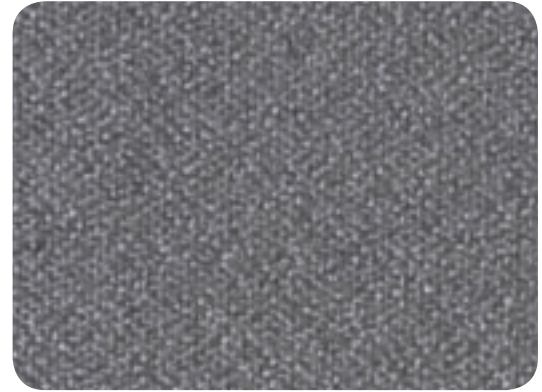
Festival



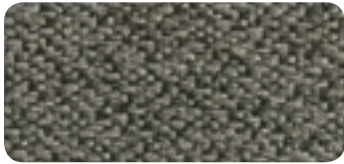
-301 | Sangria



-302 | Blue Star



-350 | Lt. Grey



-303 | Dk. Pewter



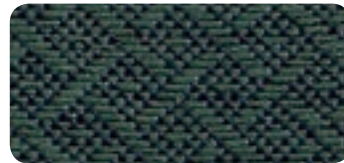
-304 | Midnight Blue

- **contents** 100% polyester • **surface abrasion** 30,000 double rubs • **break strength** warp 75 lbs, fill 150 lbs •
- **flammability** CA Tech Bull. 117, Section E UFAC Class 1 NFPA 260 • **treatments** **BLOCKaide**® a soil and stain repellent finish •

Interlink



-104 | Ink Blue



-106 | Laguna



-105 | Garnet



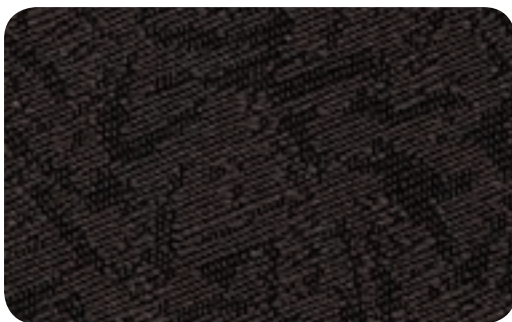
-107 | Flint



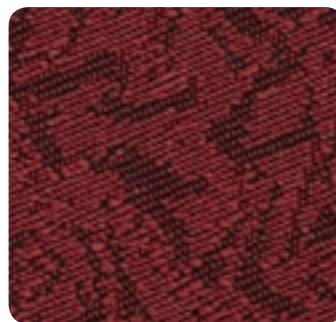
-108 | Autumn

- **contents** 100% Olefin backing: latex • **surface abrasion** 30,000+ double rubs • **break strength** warp 100 lbs, fill 125 lbs •
- **flammability** CA Tech Bull. 117, Section E UFAC Class 1 BIFMA, Class 1 • **treatments** **BLOCKaide**® a soil and stain repellent finish •

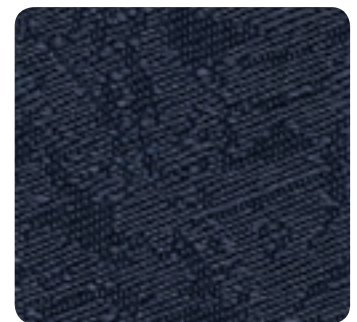
Legend



-351 | Ebony



-353 | Merlot



-354 | Royal

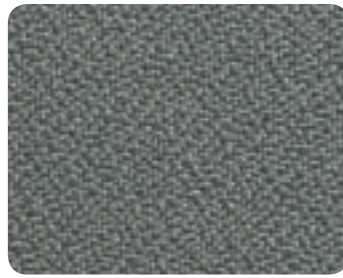
- **contents** 100% polyester • **surface abrasion** 75,000 double rubs (Wyzenbeek), 35,000 double rubs (Martindale) •
- **break strength** ASTM D5034-1995 WARP 257.3 lbs, WEFT 179.6 lbs. •
- **flammability** CA 117, Section E CS-191-53, Class 1; BIFMA FF1-78; NFPA 260-1989; UFAC, Class 1; B.S. 5852 Part 1: 1979 Ignition Source 0 Smouldering Cigarette • **treatments** soil and stain repellent finish •

\*Due to differences in dye batches and variations in printing as well as viewing environments and uneven color fading there will be slight variations in color. Exact matching may not be possible.

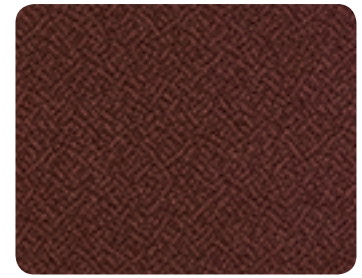
## Icon



-225 | Navy



-226 | Grey



-227 | Burgundy



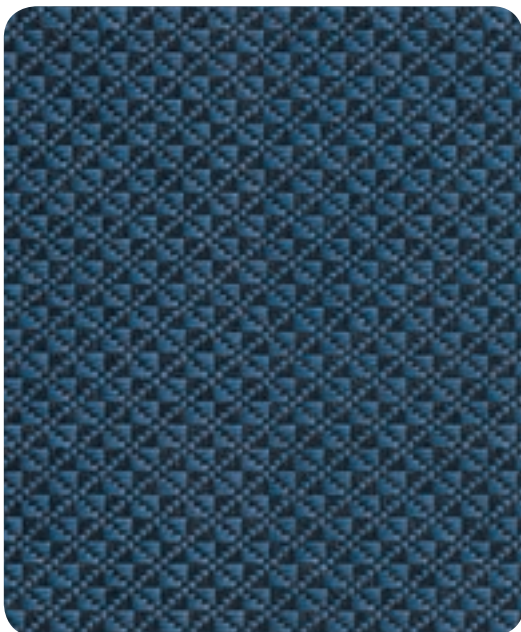
-231 | Black



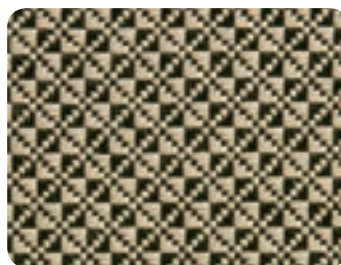
-232 | Taupe

- **contents** 100% polyester • **surface abrasion** 400,000 double rubs (Wyzenbeek ASTM-D-4157) •
- **break strength** warp 150 lbs, fill 88 lbs • **flammability** CA Tech Bull. 117, Section E BIFMA FF-1-78 NFPA 260-1989 UFAC, Class 1 •
- **treatments** ASR2000™ a soil and stain repellent finish •

## Diamond



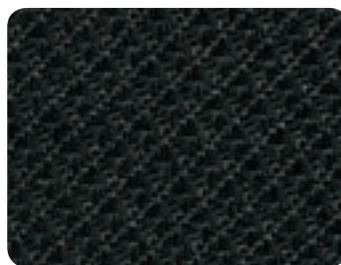
-296 | Blue Galaxy



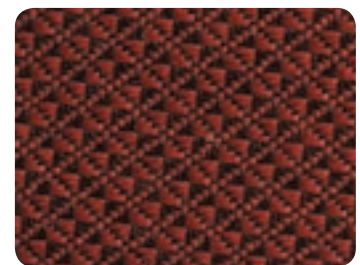
-294 | Gold Dust



-295 | Shale



-297 | Jet



-298 | Wine

- **contents** 100% polyester • **surface abrasion** 50,000 double rubs • **break strength** warp 300 lbs, fill 300 lbs •
- **flammability** CA Tech Bull. 117, Section E UFAC Class 1 NFPA 260 • **treatments** N/A •

\*Due to differences in dye batches and variations in printing as well as viewing environments and uneven color fading there will be slight variations in color. Exact matching may not be possible.

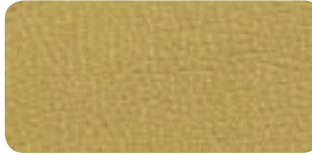
**healthcare**

**NEW** Castillo

Castillo Antimicrobial vinyls offer the new innovative Silver Ion Technology with industry leading stain resistant properties. Available in 7 soft tone finishes, each option offers a solution for every healthcare or office environment. PVC free, and able to withstand 50,000 double rubs this unique vinyl meets the demands of high traffic lobby environments.



-K001 | Buff



-K002 | Honeydew



-K003 | Breezy



-K004 | Cream



-K005 | Java



-K006 | Metal



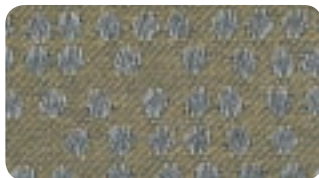
-K007 | Batik

- **finish** antimicrobial - silver based ion technology, i-clean-innovative easy clean technology •
- **contents** 100% polyurethane • **surface abrasion** exceeds 50,000 double rubs (AST 4157) • **break strength** Warp 141 lbs. Fill 78 lbs. (ASTM D5035-95) • **seam spillage** Warp 50 Fill 69 (ASTM D 4034) • **tear strength** Warp 13 Fill 9 (ASTM D 2261-96) • **pilling resistance** Class 5 (ASTM D 3511) • **crocking** Class 5 wet & dry (AATCC 8) • **colorfastness to bleach** Class 5 (AATCC 130) •

**NEW** Twilight



-K008 | Cotton



-K009 | Sky



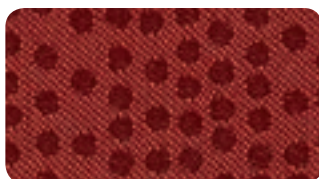
-K010 | Lily Pad



-K011 | Cocoa



-K012 | Brass



-K013 | Cherry



-K014 | Angora

- **contents** 67% polyester, 33% nylon • **surface abrasion** 50,000 double rubs min. cotton duck • **backing** SBR backcoating • **break strength** 175 lbf min. warp & 130 lbf min fill • **flammability** CA Tech Bull. 117, Sec. E, NFPA 260/UFAC Fabric Classification Class 1 • **treatments** BLOCKaide® • **seam slippage** 55 lbf min. warp and 40 lbf min. fill • **tear** 10 lbf. warp and fill • **pilling resistance** Class 4 min. • **color fastness to light** grade 4 min. at 40 hrs

\*Due to differences in dye batches and variations in printing as well as viewing environments and uneven color fading there will be slight variations in color. Exact matching may not be possible.

## NEW Fine Tune



-K100 | Luna



-K101 | Onyx



-K102 | Ash



-K103 | Herb



-K104 | Cocoa



-K113 | Indigo



-K114 | Ruby



-K105 | Tangelo

• **contents** 100% polyester • **surface abrasion** 40,000 double rubs •  
 • **break strength** WARP 80 lbs, Fill 65 lbs • **flammability** CA Tech Bull. 117, Section E UFAC Class 1 NFPA 260 • **treatments** N/A •

## NEW City Park



-K106 | Birch



-K107 | Domino



-K108 | Steely



-K109 | Kiwi



-K110 | Walnut



-K111 | Marigold

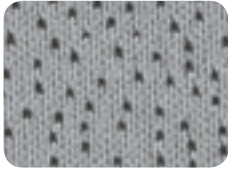
• **contents** 100% polyester • **surface abrasion** 50,000 double rubs • **break strength** warp 90 lbs, fill 76 lbs •  
 • **flammability** CA Tech Bull. 117, Section E UFAC Class 1 NFPA 260 • **treatments** N/A •

\*Due to differences in dye batches and variations in printing as well as viewing environments and uneven color fading there will be slight variations in color. Exact matching may not be possible.

unbeatable service

FreeFlex® Fabric | "Comfort You Remember"

Introducing an innovative free-flex upholstery cover providing unmatched comfort. Featuring multi-directional stretching, this 100% polyester material form-fits cushions while allowing the foam to flex more than other upholstery materials. With this heightened stretch-and-return capability, FreeFlex® also contours to an individual's shape and weight for truly individualized comfort. There's no sacrifice in durability; FreeFlex® passes 70K double rubs in Wyzenbek abrasion resistance testing.



-24 | Ember



-25 | Carbon



-26 | Azul



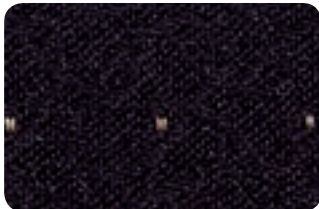
-27 | Camel



-30 | Coal

- **contents** 100% polyester • **surface abrasion** 50,000 double rubs (Wyzenbeek), 25,000 double rubs (Martindale) •
- **lightfastness** 20 hours, Class 4.5 (AATCC Test Method 16E) • **colorfastness** Wet - Class 4.5, Dry - Class 4.5 (AATCC Test Method 8) •
- **flammability** CA Tech Bull. 117, Section E •

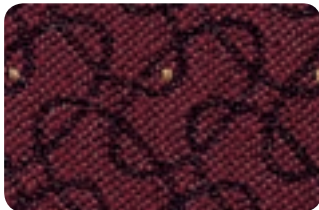
Transport



-216 | Tuxedo



-217 | Ash



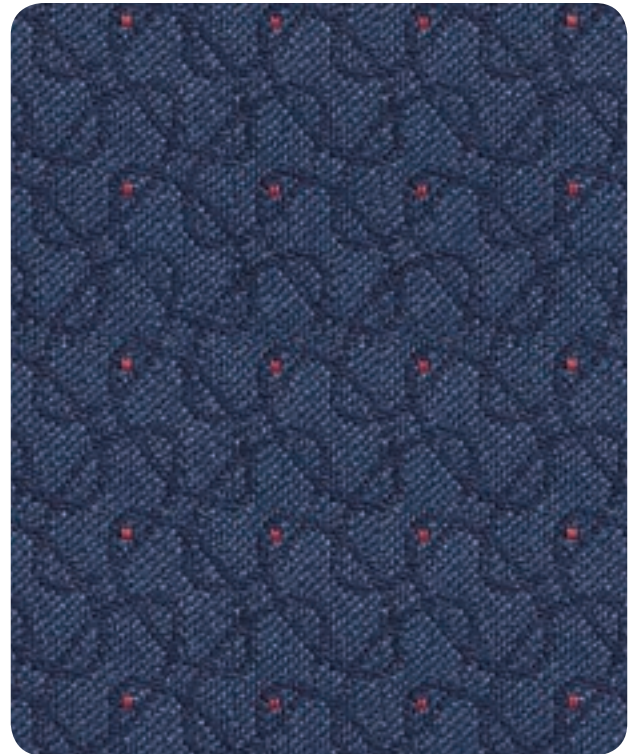
-218 | Inferno



-220 | Nugget



-214 | Ivy



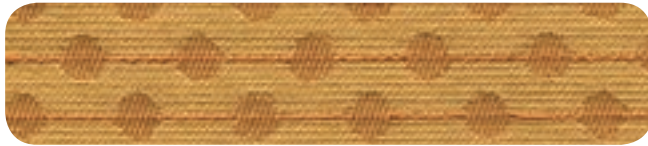
-215 | Rapids

- **contents** 58% polypropylene / 42% recycled polyester • **surface abrasion** 30,000 double rubs •
- **break strength** Warp 125 lbs. Fill 150 lbs. • **flammability** CA Tech. Bull 117, Section E UFAC Class 1, NFPA 260 Class 1 •
- **treatments** BLOCKaide™ a soil and stain repellent finish •

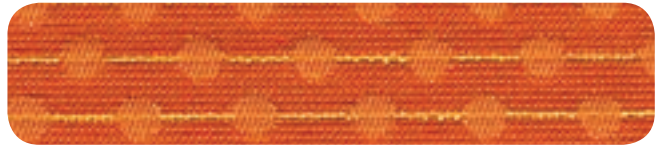
\*Due to differences in dye batches and variations in printing as well as viewing environments and uneven color fading there will be slight variations in color. Exact matching may not be possible.



## Lifesaver



R591 | Crème



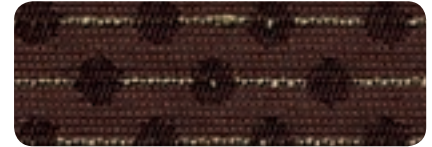
R592 | Orangée



R593 | Rouge



R594 | Bleu



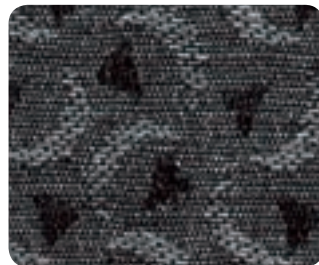
R595 | Brun

- **contents** 8% post-consumer recycled polyester, 92% pre-consumer recycled polyester •
- **surface abrasion** 40,000+ double rubs min (cotton duck) •
- **flammability** CA Tech. Bull 117, Section E, NFPA 260 Class 1 • **treatments** Scotchgard™ •

## Trinket



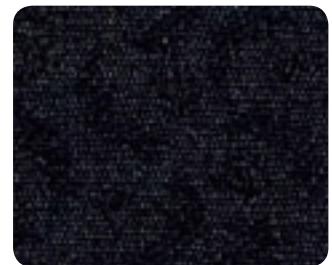
-74 | Cabernet



-75 | Charcoal Onyx



-78 | Cadet



-80 | Ebony

- **contents** Face: 58% polyester / 42% acrylic Backing: 100% acrylic • **surface abrasion** heavy duty 45,000 cycles •
- **break strength** Warp 73 lbs. Fill 50 lbs. • **flammability** CA 191-53 Tech. Bull 117, Section E UFAC Class 1 •
- **treatments** Teflon™ fabric protector only by DuPont® (Teflon™ is a registered trademark of DuPont®. Only DuPont® makes Teflon™) •

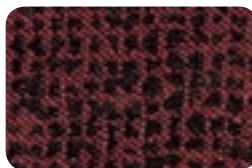
## Brackle



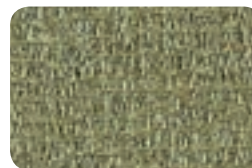
-315 | Charcoal



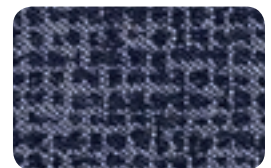
-396 | Copper



-397 | Merlot



-398 | Sage



-399 | Blue

- **contents** 100% recycled polyester • **surface abrasion** 30,000 double rubs • **break strength** warp 150 lbs, fill 100 lbs •
- **flammability** CA Tech Bull. 117, Section E UFAC Class 1 NFPA 260 • **treatments** BLOCKaide® a soil and stain repellent finish •

## Crave *\*to be discontinued during 2015*



-363 | Black Triangle



\*-316 | Khaki/Taupe



\*-317 | Midnight Blue



\*-320 | Charcoal/Graphite

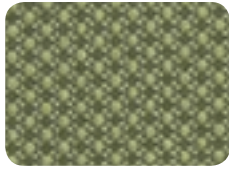
- **contents** 65% cotton / 35% polyester • **surface abrasion** 30,000 double rubs • **break strength** Warp 50 lbs. Fill 50 lbs. •
- **flammability** BIFMA X5.7 CA Tech. Bull 117, Section E • **treatments** stain repellent Superclear .5 oz. •

\*Due to differences in dye batches and variations in printing as well as viewing environments and uneven color fading there will be slight variations in color. Exact matching may not be possible.

unbeatable service

grade fabric | **C**

Gauge



-921 | Pesto



-922 | Adrift



-923 | Sizzle



-920 | Offshore



-924 | Bronze



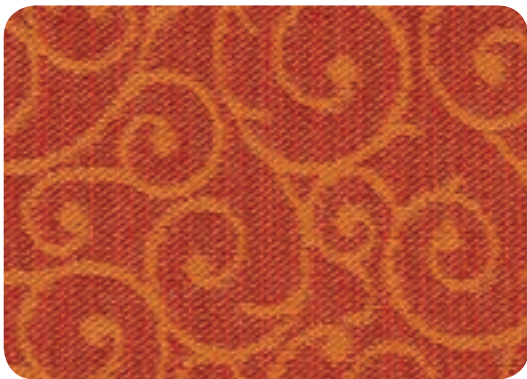
-925 | Oxide



-926 | Admiral

- **contents** 100% polyester • **surface abrasion** 102,000 double rubs (cotton duck) • **break strength** warp 237 lbs, fill 284 lbs •
- **flammability** CA Tech Bull. 117, Section E UFAC, Class 1 ASTM E84-87 • **treatments** soil & stain repellent finish •

\*recommended for lounge seating **NEW** Tracery



-K026 | Persimmon



-K021 | Khaki



-K022 | Chestnut



-K023 | Taupe



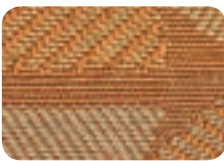
-K024 | Azure



-K025 | Golden

- **contents** 100% recycled polyester • **surface abrasion** 75,000 double rubs min. cotton duck • **backing** acrylic • **tear** 10 lbf. warp and fill • **break strength** 175 lbf min. warp & 100 lbf min fill • **flammability** CA Tech Bull. 117, Sec. E, NFPA 260/UFAC Fabric Classification Class 1 • **treatments** BLOCkaide® •
- **seam slippage** 60 lbf min. warp and fill • **tear** 10 lbf. warp and fill • **pilling resistance** Class 4 min. • **color fastness to light** grade 4 min. at 40 hrs

\*recommended for lounge seating **NEW** Mary Go Round



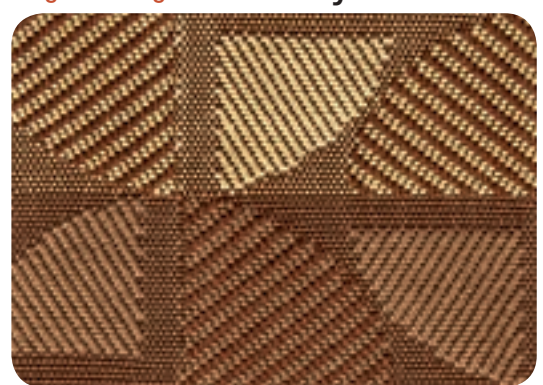
-K027 | Dijon



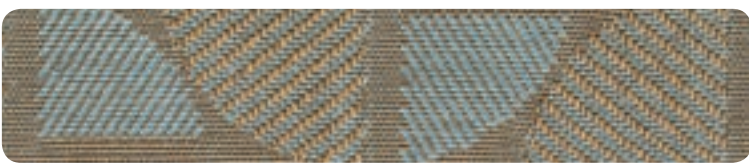
-K028 | Horizon



-K029 | Flame



-K031 | Mocha



-K030 | Blue Mist

- **contents** 100% recycled polyester • **surface abrasion** 30,000 double rubs min. cotton duck • **backing** none • **break strength** 200 lbf min. warp & 250 lbf min fill • **flammability** CA Tech Bull. 117, Sec. E, NFPA 260/UFAC Fabric Classification Class 1 • **treatments** BLOCkaide® • **seam slippage** 60 lbf min. warp and fill • **tear** 25 lbf. warp and fill • **pilling resistance** Class 4 min. • **color fastness to light** grade 4 min. at 40 hrs

\*Due to differences in dye batches and variations in printing as well as viewing environments and uneven color fading there will be slight variations in color. Exact matching may not be possible.

## Recycled Fabric



**100% Recycled.** Wherever chairs are identified with our CF graphic, you can select 100% recycled polyester fabrics from our Champagne, Elements and Ladders collections. All surpass 100,000 double-rub durability testing as well as CAL 117, NFPA 260 and UFAC Class 1 flammability standards. So you can protect your immediate environment as well as our planet. That's big-picture thinking. See your choices at [www.officestar.net/fabrics](http://www.officestar.net/fabrics)

## NEW Key Largo



Greenguard certified, Resilience SR Stain resistance, anti-microbial and anti-bacterial protection Key Largo is a fun way to brighten the room. Engineered to withstand 250,000 double rubs, Key Largo vinyls top the list for a solution perform in the most extreme environments.



-K038 | Chocolate



-K039 | Palm



-K040 | Aqua



-K041 | Sand



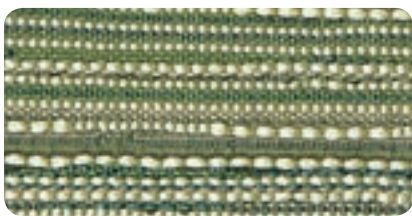
-K042 | Parchment



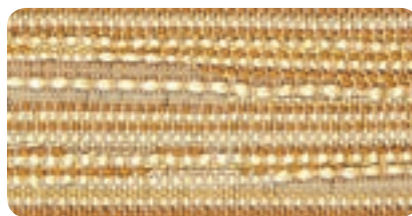
-K043 | Tangerine

- **contents** 100% PVC vinyl • **surface abrasion** passes 250,000 double rubs • **backing** 100% brushed polyester knit • **break strength** min warp 79, fill 56 • **flammability** passes NFPA 260 (equiv. to UFAC), Class 1, Cal. 117, Sec. E, ASTM E84 Class 2 or B (adhered), BIFMA, FMVSS 302, IMO A.652 (16) 8.2 & 8.3, may comply with Cal. Tech. Bull. 133 when combined with appropriate components •
- **pilling resistance** Class N/A • **color fastness to light** 1000 hrs

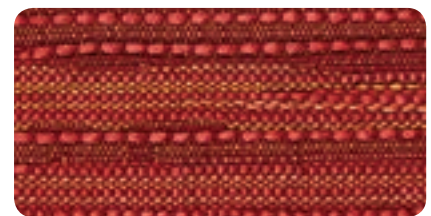
## NEW Cosmopolitan



K032 | Spring



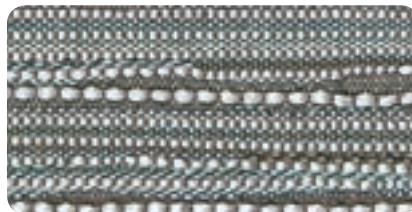
K033 | Cornsilk



K034 | Crimson



K035 | Ivory



K036 | Shadow

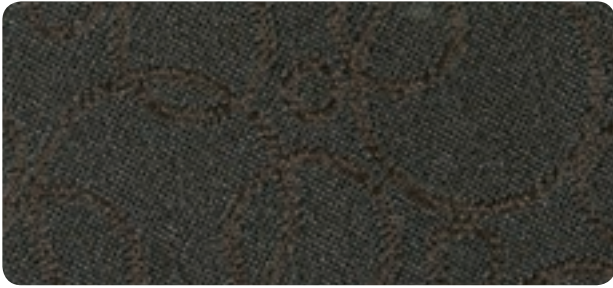


K037 | Earthen

- **contents** 38% post-consumer recycled polyester, 62% pre-consumer recycled polyester •
- **surface abrasion** 50,000 double rubs min. cotton duck • **break strength** 200 lbf min. warp, 250 lbf min fill •
- **pilling resistance** class 4 min. • **seam slippage** 45 lbf min. warp & 35 lbf min. fill
- **flammability** CA Tech Bull. 117, Sec. E, NFPA/UFAC Fabric Classification - Class 1 • **color fastness to light** grade 4 min. at 40 hrs •

\*Due to differences in dye batches and variations in printing as well as viewing environments and uneven color fading there will be slight variations in color. Exact matching may not be possible.

Champagne



-930 | Truffle



-931 | Corkscrew



-932 | Fizz



-933 | Muscat



-934 | Chablis

- **contents** 100% recycled polyester • **surface abrasion** 100,000 double rubs (cotton duck) •
- **break strength** min warp 250 lbs, min fill 250 lbs •
- **flammability** CA Tech Bull. 117, Section E UFAC Class 1 NFPA 260 Class 1 • **treatments** N/A •

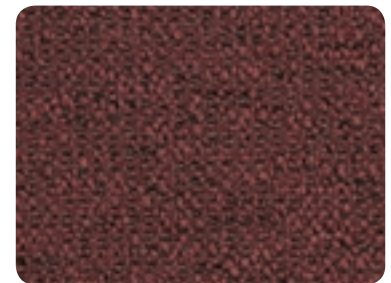
Element



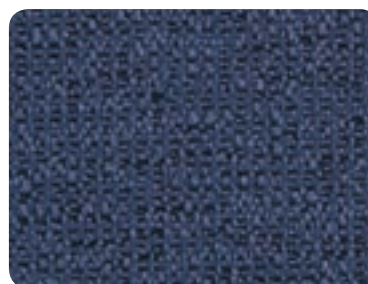
-899 | Smoke



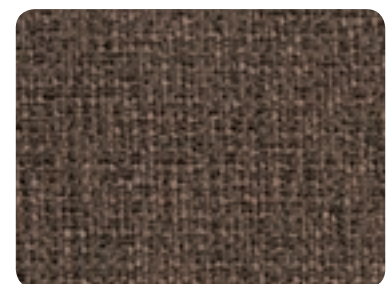
-900 | Putty



-901 | Plum



-902 | Sapphire



-903 | Earth

- **contents** 100% recycled polyester • **surface abrasion** 130,000+ double rubs • **break strength** min warp 100 lbs, min fill 100 lbs •
- **flammability** CA Tech Bull. 117, Section E UFAC Class 1 NFPA 260 Class 1 • **treatments** N/A •

\*Due to differences in dye batches and variations in printing as well as viewing environments and uneven color fading there will be slight variations in color. Exact matching may not be possible.