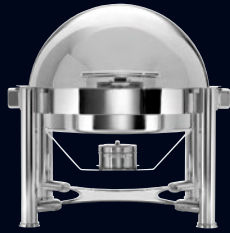


new, improved, exceptional

The new and improved traditional and stacking WNK Chafers are perfect for your buffet presentation. Featuring a clever metal brake mechanism and cover that have been upgraded for added durability, the new chafers will remain open at any angle. The food and water pans have been thickened to withstand the rigors of the hospitality industry, and convenient slide brackets have been added to the bottom of the water pans to accommodate an electrical heating unit. Designed with the consumer in mind, these exceptional chafers are sure to meet the demands of high-volume banqueting service.



Round Roll Top Chafing Dish (Stackable)
5370S531 L 21" W 17" H 19" (6 3/4 qts)



Round Food Pan
5370S547 D 15 1/8" H 3" (6 3/4 Qts)
(For S531, S542, S471)



Round Water Pan
5370S546 L 16 5/8" W 15 3/4" H 4"
w/Channel for Elect Heating Unit
(For S531, S542, S471)



Fuel Holder
5370S408



Oblong Roll Top Chafing Dish (Stackable)
5370S530 L 27" W 22" H 19" (8 1/2 qts)



Oblong Food Pan
5370S545 L 21" W 12 7/8" H 2 1/2" (8 1/2 Qts)
(For S530, S541, S470)



Oblong Water Pan
5370S544 L 23" W 14 5/8" H 4"
(For S530, S541, S470)



Fuel Holder
5370S408



Chafing Dish Round
5370S542 D 20" H 18" (6 3/4 qts)



Round Food Pan
5370S547 D 15 1/8" H 3" (6 3/4 Qts)
(For S531, S542, S471)



Round Water Pan
5370S546 L 16 5/8" W 15 3/4" H 4"
(For S531, S542, S471)



Fuel Holder
5370S408



Soup Station Accessories for S531 & S541
Soup Station Lid for Round Soup Station
5370S549 D 14 1/8" (Fits S546 Water Pan)
Soup Bucket
5370S550 D 9 1/8" H 8 3/4" (3 3/4 qts)



Chafing Dish Rectangle
5370S541 L 26" W 17 3/4" H 16 3/4" (8 1/2 qts)



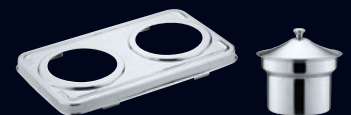
Oblong Food Pan
5370S545 L 21" W 12 7/8" H 2 1/2"
(8 1/2 Qts)
(For S530, S541, S470)



Oblong Water Pan
5370S544 L 23" W 14 5/8" H 4"
(For S530, S541, S470)



Fuel Holder
5370S408



Soup Station Accessories for S530 & S541
Soup Station Lid for Rectangle Soup Station
5370S548 L 20 1/4 W 12 1/4" (Fits S544 Water Pan)
Soup Bucket
5370S550 D 9 1/8" H 8 3/4" (3 3/4 qts)

For part numbers for food & water pans for S400, S401, S470 & S471 please see Price List.

D=Diameter L=Length W=Width H=Height • All Products are Measured at Max Capacity

All products are subject to availability. For further details of items available in each pattern please refer to the latest price list or contact your customer service representative.