

Item No: _____

Model No: _____

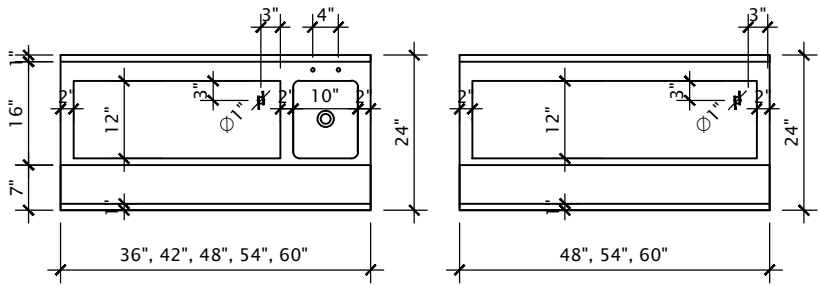
Qty: _____

Project: _____



Cocktail Mix Unit

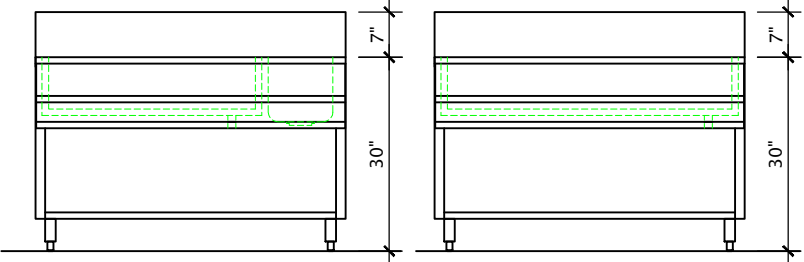
- Heavy duty stainless steel construction
- Faucet holes on 4 inch centres
- Seven inch high backsplash
- Insulated Ice Bin
- Galvanized Legs with adjustable bullet feet
- Integrated Stainless Steel Speed Rail
- See page 35 for Deck Mount Faucets



Model Number	Bowl Size D" x L" x H"	Ice Bin Size D" x L" x H"	Overall Size D" x L" x H"	Weight lbs.
CMU48	12 x 10 x 10	12 x 32 x 10	24 x 48 x 30/37	95
CMU54	12 x 10 x 10	12 x 38 x 10	24 x 54 x 30/37	110
CMU60	12 x 10 x 10	12 x 44 x 10	24 x 60 x 30/37	120
CMU48NS	N/A	12 x 44 x 10	24 x 48 x 30/37	95
CMU54NS	N/A	12 x 50 x 10	24 x 54 x 30/37	110
CMU60NS	N/A	12 x 56 x 10	24 x 60 x 30/37	120

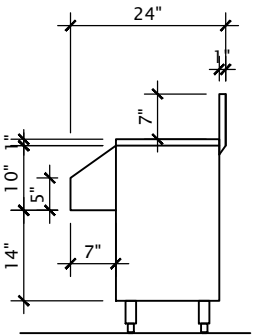
Sizes nominal, detailed specifications available upon request. Specifications subject to change without notice.

■ Sink with 1 1/2" Drain



CMU36;42;48;54;60

CMU48NS;54NS;60NS



C US
U.P. Code
ASME A112.19.3/CSA B45.4



Corporate Head Office
2780 Coventry Road,
Oakville, Ontario, L6H 6R1
Phone: 905-825-9665
Fax: 905-825-0965
info@tarrison.com
www.tarrison.com

US Distribution Center
150 Gratiot Blvd,
Marysville, MI 48040
info@tarrison.com
www.tarrison.com

US Sales Office
29 Craftsbury Crest,
Essex Junction, VT. 05452
Phone: 802-872-9292
info@tarrison.com
www.tarrison.com