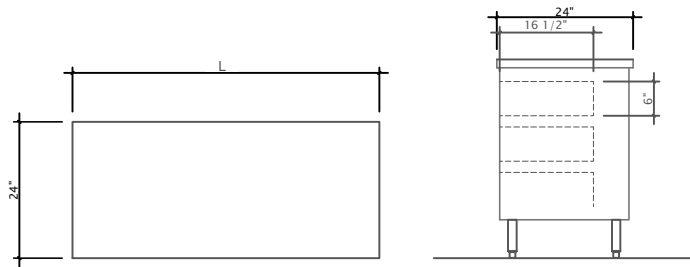
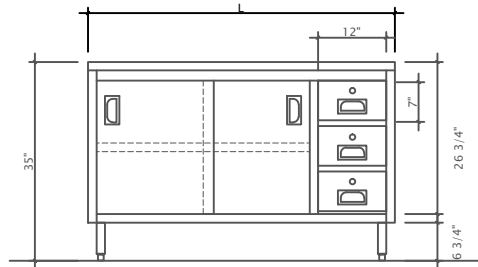
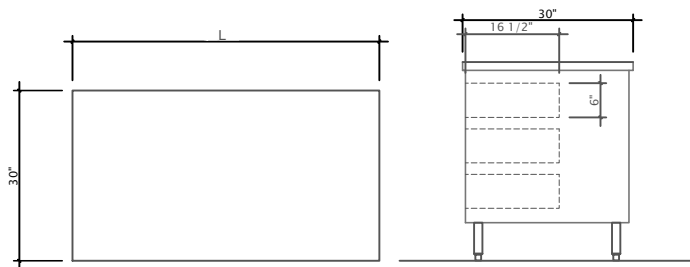


FLAT TOP CABINETS

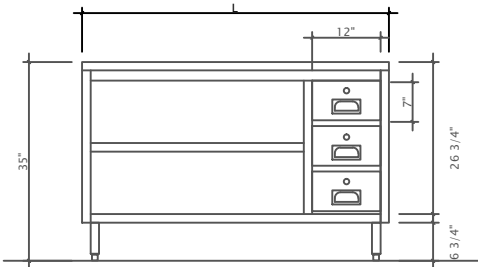
- All heavy duty series stainless steel construction
- Fully welded and assembled
- Reinforced frame and H-Style hat channels
- Removable sliding stainless steel doors
- Adjustable stainless steel intermediate shelf
- Adjustable stainless steel heavy duty leg assembly
- Optional drawers, (12x16.5x7") come complete with locks
- Full extension drawer slides



2 Sliding Doors



Open Cabinet



24" DEEP FLAT TOP CABINETS

Model No. with 2 sliding doors	Overall Size D" x L" x H"	Weight lbs.
C2436D	24 x 36 x 35	120
C2442D	24 x 42 x 35	130
C2448D	24 x 48 x 35	140
C2460D	24 x 60 x 35	165
C2472D	24 x 72 x 35	200
C2484D	24 x 84 x 35	230
C2496D	24 x 96 x 35	260

30" DEEP FLAT TOP CABINETS

Model No. with 2 sliding doors	Overall Size D" x L" x H"	Weight lbs.
C3036D	30 x 36 x 35	130
C3042D	30 x 42 x 35	145
C3048D	30 x 48 x 35	160
C3060D	30 x 60 x 35	190
C3072D	30 x 72 x 35	220
C3084D	30 x 84 x 35	250
C3096D	30 x 96 x 35	280

24" DEEP FLAT TOP CABINETS

Model No. with open front	Overall Size D" x L" x H"	Weight lbs.
CO2436D	24 x 36 x 35	120
CO2442D	24 x 42 x 35	130
CO2448D	24 x 48 x 35	140
CO2460D	24 x 60 x 35	165
CO2472D	24 x 72 x 35	200
CO2484D	24 x 84 x 35	230
CO2496D	24 x 96 x 35	260

30" DEEP FLAT TOP CABINETS

Model No. with open front	Overall Size D" x L" x H"	Weight lbs.
CO3036D	30 x 36 x 35	130
CO3042D	30 x 42 x 35	145
CO3048D	30 x 48 x 35	160
CO3060D	30 x 60 x 35	190
CO3072D	30 x 72 x 35	220
CO3084D	30 x 84 x 35	250
CO3096D	30 x 96 x 35	280



Corporate Head Office
 2780 Coventry Road,
 Oakville, Ontario, L6H 6R1
 Phone: 905-825-9665
 Fax: 905-825-0965
 sales@tarrison.com
 www.tarrison.com

US Distribution Center
 150 Gratiot Blvd,
 Marysville, MI 48040
 Phone: 810-388-9920
 Fax: 810-388-9921
 craigc@tarrison.com
 www.tarrison.com

US Sales Office
 29 Craftbury Crest,
 Essex Junction, VT. 05452
 Phone: 802-872-9292
 Fax: 802-978-9603
 tarrisonus@adelphia.net
 www.tarrison.com