

ASFT Floor Troughs Anti-Spill Design

SPECIFICATION:

ASFT Model Floor Troughs are 14-gauge type 304 stainless steel. Horizontal corners are coved and the trough is integrally pitched toward a waste outlet with a stainless steel beehive strainer and a 4" OD tailpiece.

Anti-Spill features are built into the trough, which is 6" deep.

Recessed flange and 1" deep ledge for IMC grating are integral with the unit.

Joints are TIG welded and leak-proof. Exposed surfaces finished brush satin.

PRODUCT GUIDE:

Use in Commercial and Institutional Buildings or large food prep facilities for high volume, rapid discharge application.

Anti-Spill feature directs splashing waste water to inside corners of the trough away from the equipment.

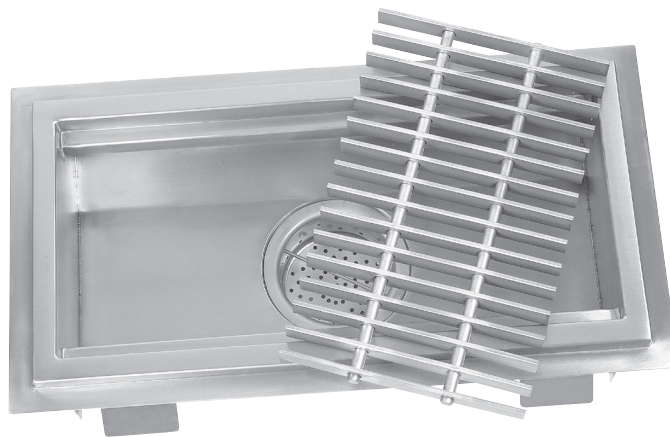
Recessed flange supports floor tile and provides a grout pocket.

Setting frame for waterproof membrane and/or integral seepage flange with "weep" holes can be added for wet floor areas.

Extension arms and intersections available for multiple equipment layout.

OPTIONS:

- 12-gauge stainless steel
- Scrap collection tray
- Use with any style IMC trough grating
- Custom designs, sizes and waste location
- Optional wastes and locations
- Seepage flange and "weep" holes
- See Price Book for other options
- Standard and stock sizes fit most applications



*Price page 35

Specifications subject to change without notice.



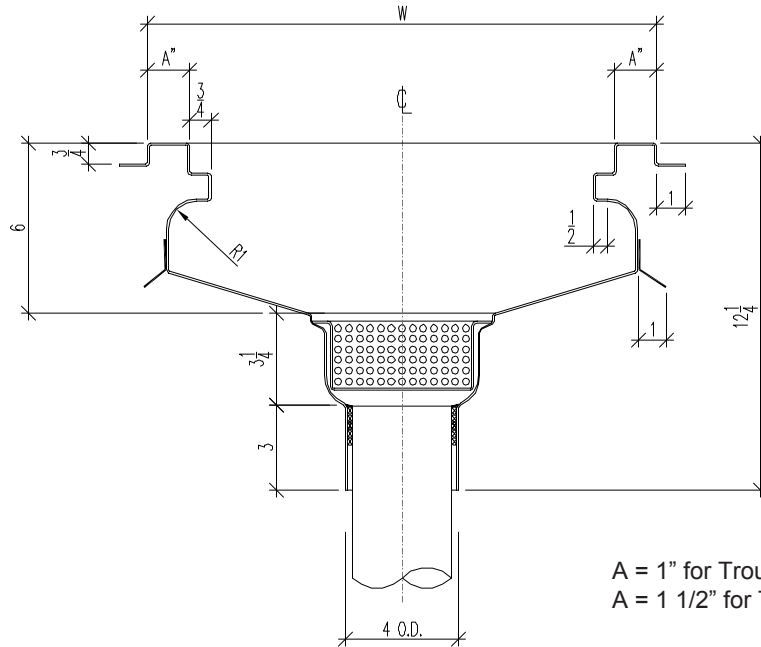
P.O. Box 206
Copiague, NY 11726-0206

800-221-5644/631-789-8881
Fax: 631-789-3633

www.imcteddy.com

ASFT-30 1007

ASFT Floor Troughs Anti-Spill Design



ANTI-SPILL FLOOR TROUGHS, STANDARD DESIGN - 6" Deep

MODEL	SIZE (W x L)	METRIC	WEIGHT	MODEL	SIZE (W x L)	METRIC	WEIGHT
ASFT-1224	12" x 24"	305 x 610	20	ASFT-2424	24" x 24"	610 x 610	32
ASFT-1236	12" x 36"	305 x 914	30	ASFT-2436	24" x 36"	610 x 914	48
ASFT-1248	12" x 48"	305 x 1219	40	ASFT-2448	24" x 48"	610 x 1219	64
ASFT-1260	12" x 60"	305 x 1524	50	ASFT-2460	24" x 60"	610 x 1524	80
ASFT-1272	12" x 72"	305 x 1829	60	ASFT-2472	24" x 72"	610 x 1829	96
ASFT-1284	12" x 84"	305 x 2134	70	ASFT-2484	24" x 84"	610 x 2134	112
ASFT-1296	12" x 96"	305 x 2438	80	ASFT-2496	24" x 96"	610 x 2438	128
ASFT-12108	12" x 108"	305 x 2743	90	ASFT-24108	24" x 108"	610 x 2743	144
ASFT-12120	12" x 120"	305 x 3048	100	ASFT-24120	24" x 120"	610 x 3048	160
ASFT-1824	18" x 24"	458 x 610	24	ASFT-3024	30" x 24"	762 x 610	44
ASFT-1836	18" x 36"	458 x 914	36	ASFT-3036	30" x 36"	762 x 914	66
ASFT-1848	18" x 48"	458 x 1219	48	ASFT-3048	30" x 48"	762 x 1219	88
ASFT-1860	18" x 60"	458 x 1524	60	ASFT-3060	30" x 60"	762 x 1524	110
ASFT-1872	18" x 72"	458 x 1829	72	ASFT-3072	30" x 72"	762 x 1829	132
ASFT-1884	18" x 84"	458 x 2134	84	ASFT-3084	30" x 84"	762 x 2134	154
ASFT-1896	18" x 96"	458 x 2438	96	ASFT-3096	30" x 96"	762 x 2438	176
ASFT-18108	18" x 108"	458 x 2743	108	ASFT-30108	30" x 108"	762 x 2743	198
ASFT-18120	18" x 120"	458 x 3048	120	ASFT-30120	30" x 120"	762 x 3048	220

Note - Standard troughs up to 96" have one (1) waste at center. Over 96", troughs have two (2) wastes equidistant.

*See Price book page 35, 39, 43, 47, 53 & 55-59 for additional sizes and options.

Specifications subject to change without notice.



P.O. Box 206
Copiague, NY 11726-0206

800-221-5644/631-789-8881
Fax: 631-789-3633

www.imcteddy.com

ASFT-30 1007