

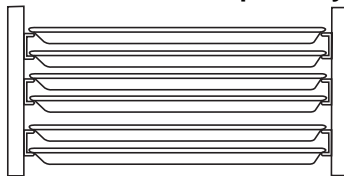
Channel Pan Racks

ITEM NO. _____
 QUANTITY NO. _____
 JOB NO. _____
 SPEC NO. _____

Specifications:

- Ideal for high and low profile products. General storage and transporting of 18" x 26" trays and pans. "C" Channel holds pans securely on lip.
- Constructed of extra heavy duty, all welded 1" square aluminum. Channels are ½" deep. Channel runners are 1½" apart.
- Rolls easily on four 5" heavy duty, swivel stem casters.

C-Channel holds lip of tray



ALC-1840

Model Number	Ordering Number	Overall Dimensions						Pan Cap.	Space Between Runners		Approx. Ship Weight	
		Width		Length		Height			(lb)	(kg)	(lb)	(kg)
		(in)	(mm)	(in)	(mm)	(in)	(mm)					
ALC-1836	110648	21	533	27	686	64	1,626	36	1½	38	40	18
ALC-1840	110672							40			42	19
Replacement Caster Information												
757	123684	Swivel Square Stem Caster with 5" Polyurethane Wheel									—	
7112	122180	5" Polyurethane Wheel									—	

Freight Class: 125

LABORATORY CERTIFICATION AND APPROVAL SYMBOLS:



Channel Pan Racks



439 Oak Street • Garden City, NY 11530 • Tel: 1-800-444-3595 • Fax: 516-222-0371
 www.winholt.com • sales@winholt.com

NEW YORK • TEXAS • CALIFORNIA • MICHIGAN